

ECLIPSE

MM=112

VICTOR BAKER

INTRO

Musical notation for the Intro section, featuring a single bass clef staff with a 3/4 time signature and a repeat sign. The melody consists of eighth and quarter notes.

A A MIN7 SUS

Musical notation for section A, featuring a grand staff with treble and bass clefs. The treble clef part contains a melodic line with eighth and quarter notes, while the bass clef part contains a bass line with eighth and quarter notes.

G MA7 #11 / B

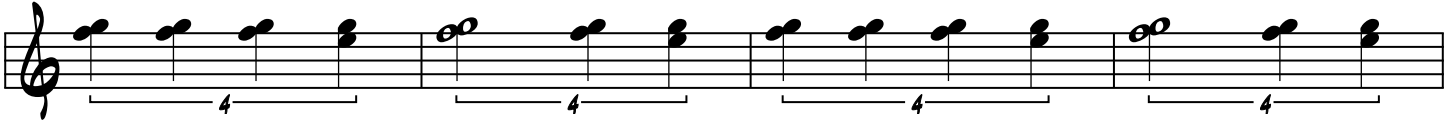
Musical notation for the G MA7 #11 / B section, featuring a single treble clef staff with chords and a 4-measure bracket. The notation shows a sequence of chords: G MA7 #11, B, G MA7 #11, B, G MA7 #11, B, G MA7 #11, B.

A MIN7 SUS

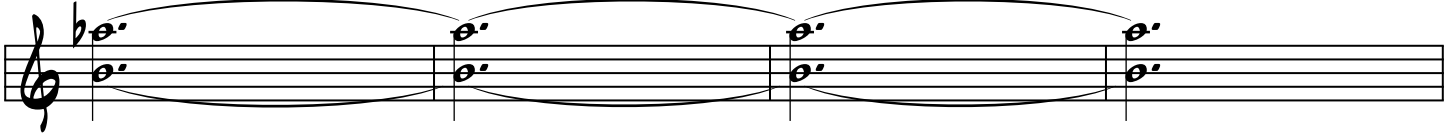
Musical notation for the A MIN7 SUS section, featuring a grand staff with treble and bass clefs. The treble clef part contains a sustained chord (A MIN7 SUS) across four measures, while the bass clef part contains a bass line with eighth and quarter notes.

B (ON CUE DURING SOLOS ONLY) REPEAT UNTIL CUE TO NEXT SOLOIST-
MELODY BY OTHER INSTRUMENTS AFTER FIRST TIME

G7sus



E/F



G7sus



E/F



E7sus b9

