

# SEPT 24 2012 UNTITLED

VICTOR BAKER

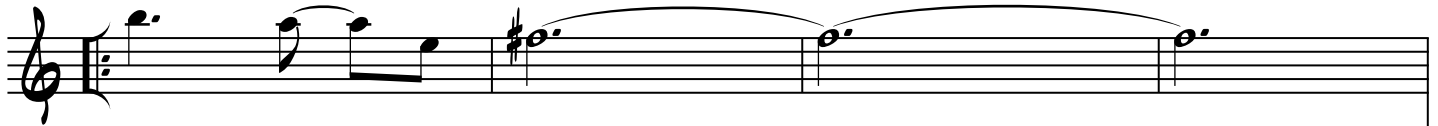
FREE OPEN IMPROV ON B MINOR PENT. VOICINGS  
BASS ALTERNATES BETWEEN NOTES "E" AND "G"



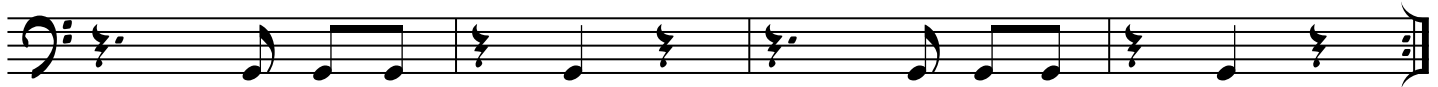
GITAR SETTLES INTO THIS GROOVE:



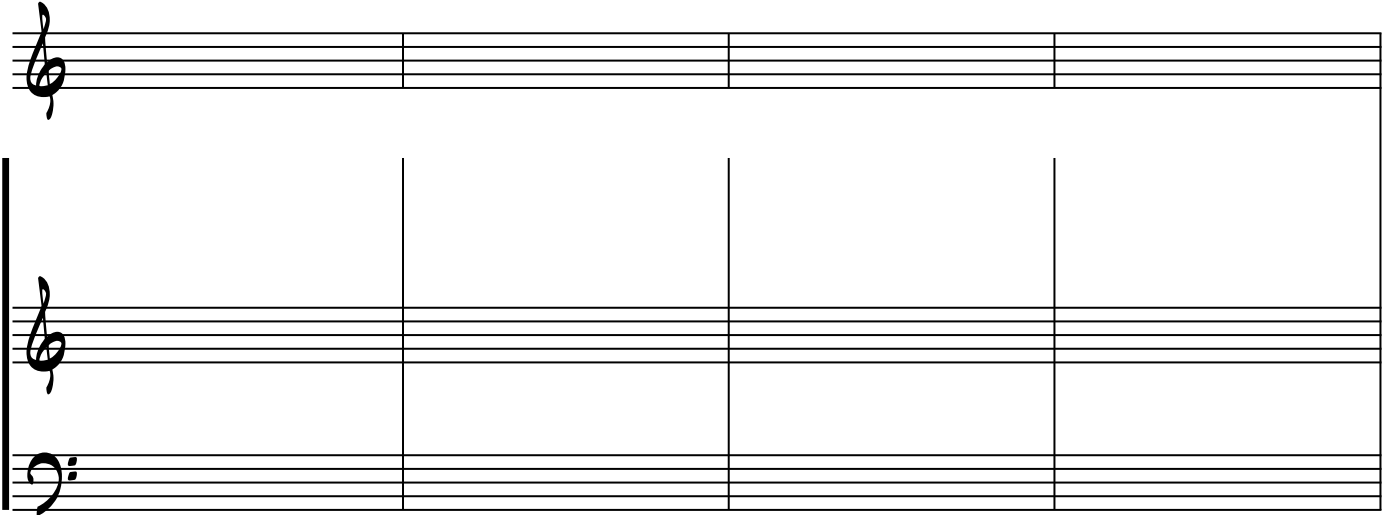
## A



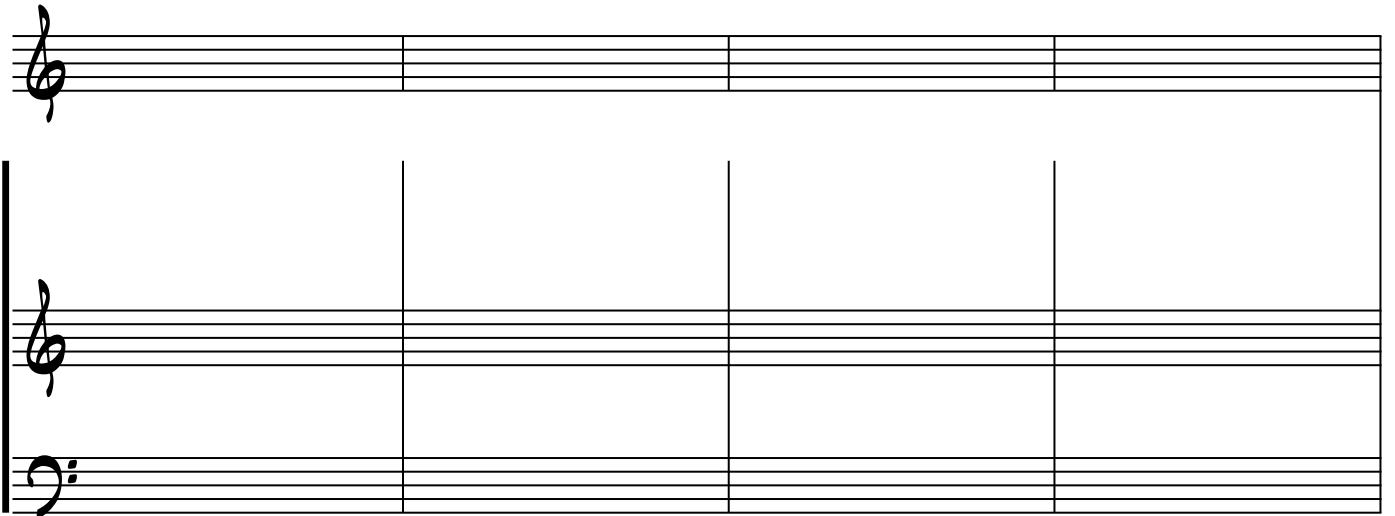
GITAR CONTINUES GROOVE...



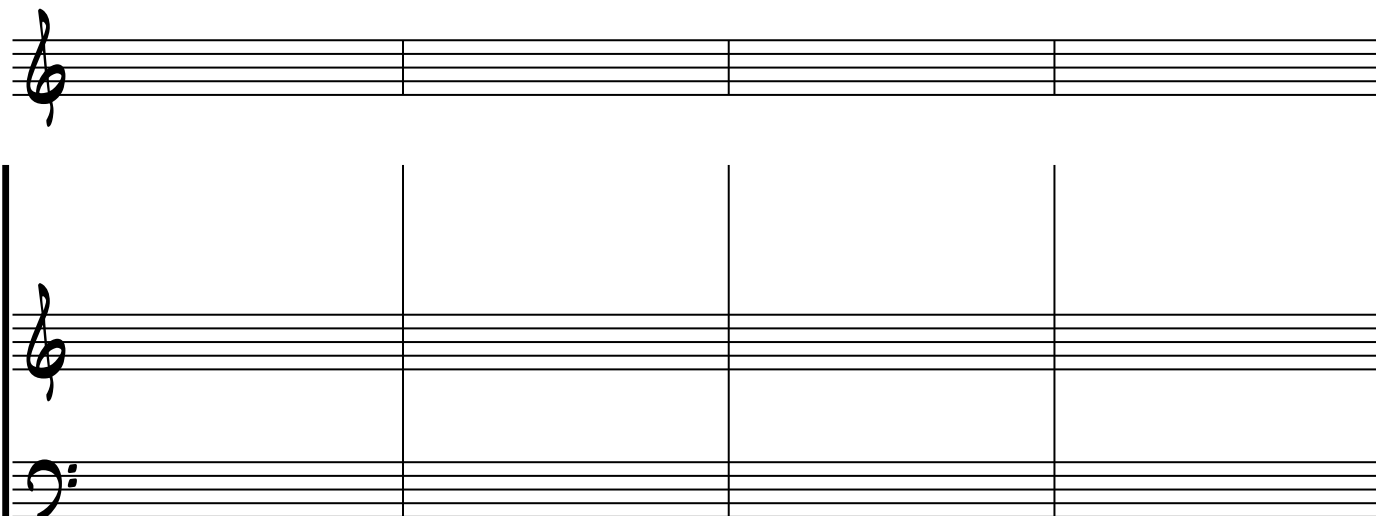




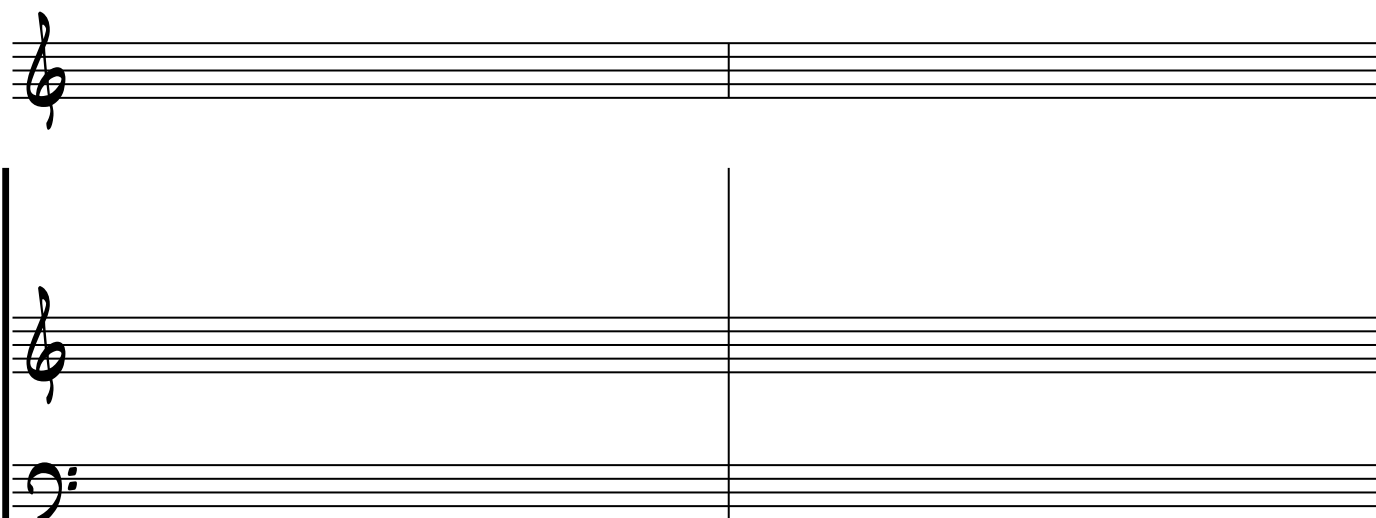
A musical staff system consisting of four staves. The top staff has a treble clef. The second and third staves have treble clefs. The bottom staff has a bass clef. The system is divided into four measures by vertical bar lines.



A second musical staff system, identical in structure to the first, consisting of four staves with treble and bass clefs and four measures.



A musical staff system consisting of three staves. The top staff begins with a treble clef. The system is divided into four measures by vertical bar lines. The staves are otherwise empty.



A second musical staff system, identical in structure to the first. It consists of three staves, with the top staff starting with a treble clef. The system is divided into four measures by vertical bar lines. The staves are otherwise empty.